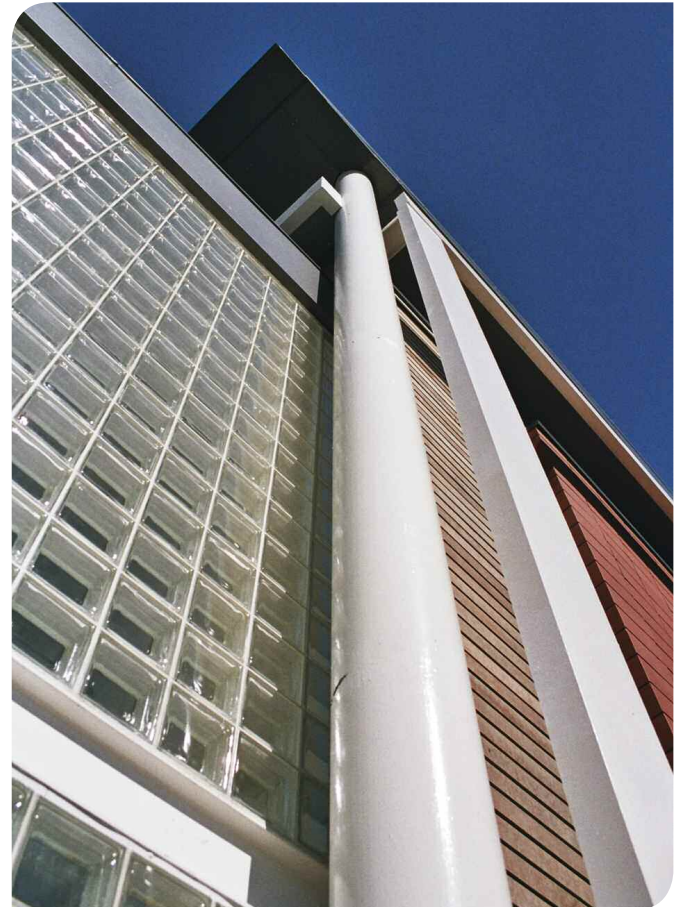


Ashbourne Sports & Community Centre

Ashbourne, Derbyshire



Status:

Completed 2006

Value:

£2.3 million

Client:

Derbyshire Dales District Council

Description:

The new sports complex boasts a striking entrance and reception area and includes a new squash centre, two sports halls, a fitness gymnasium, dry changing facilities and a community centre.

The main multi-purpose floor court sports hall has been designed in accordance with Sport England guidelines and careful consideration was given to the ventilation and lighting of the hall and a high quality sports floor was specified.

The setting of the new building demanded a creative solution which involved breaking down the bulk of the main hall by an inventive use of materials and the elevation proportioned using the golden section.

