

Jubilee House

Derby



Status:

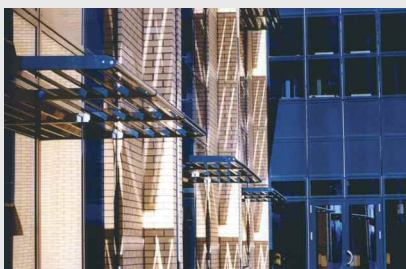
Completed 2002

Value:

£5 million

Client:

Derby Estates Ltd



Description:

This building is a 90,000 sqft four storey headquarters office building on a re-claimed gas works adjacent to the main railway line in Derby.

The concept behind the design is three rail carriages linked by a central hub. The "carriages" contain the office accommodation, the "hub" has the main stair, lifts and service risers. The building is naturally ventilated with solar shading to the external façade. Solar control glazing and brise soleil are incorporated into the external glazing system with no visible fixings.

The building was awarded the Derby Civic Society George Larkin Silver Salver for the best new building in Derby 2002.

