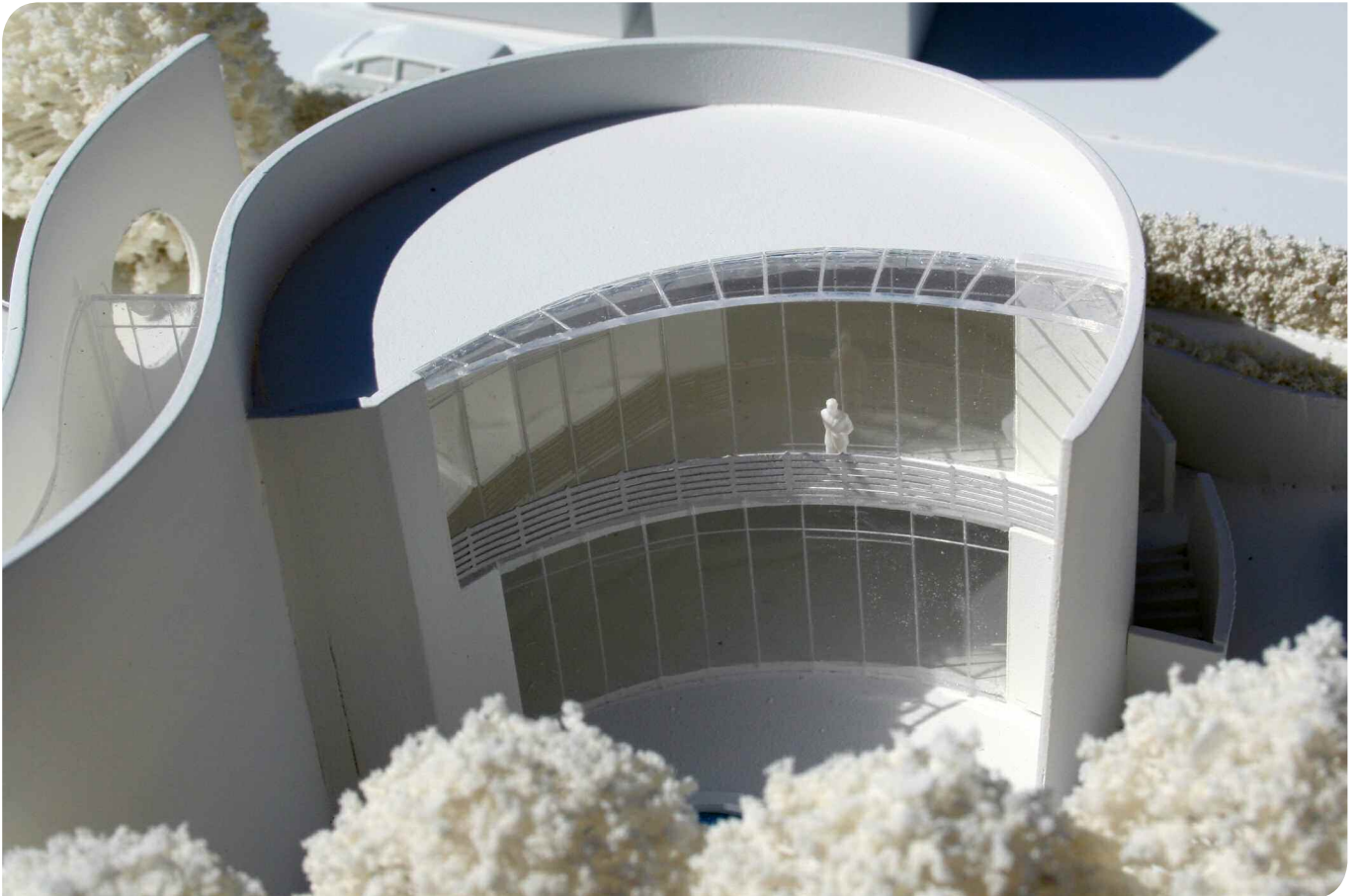


## Field House

Newcastle-under-Lyme, Staffordshire



**Status:**  
Conceptual Design

**Value:**  
Circa £750,000

**Client:**  
Private Individual

**Description:**  
The brief was to provide a contemporary and sustainable home comprising four bedrooms, two reception rooms, basement swimming pool, gymnasium and office accommodation.

The development, situated on a sloping site, was for inverted living being single storey on its road side elevation.

